

NOTE:
STUB STREET CONNECTION
HAS BEEN DESIGNATED AS
A "THROUGH STREET"

FUTURE WINSTON-SALEM NORTHERN BELTWAY
WESTERN LOOP SECTION CA

100' BUFFER
NCDOT R/W

DEDICATED FOR OPEN SPACE
122,864 SF

30'
BUFFER

PERENNIAL
STREAM

30'
BUFFER

FLOODWAY

COMMON AREA
56,192 SF

CEDARMERE DRIVE
50' R/W (PUBLIC)

WOOD
DUCK
LANE

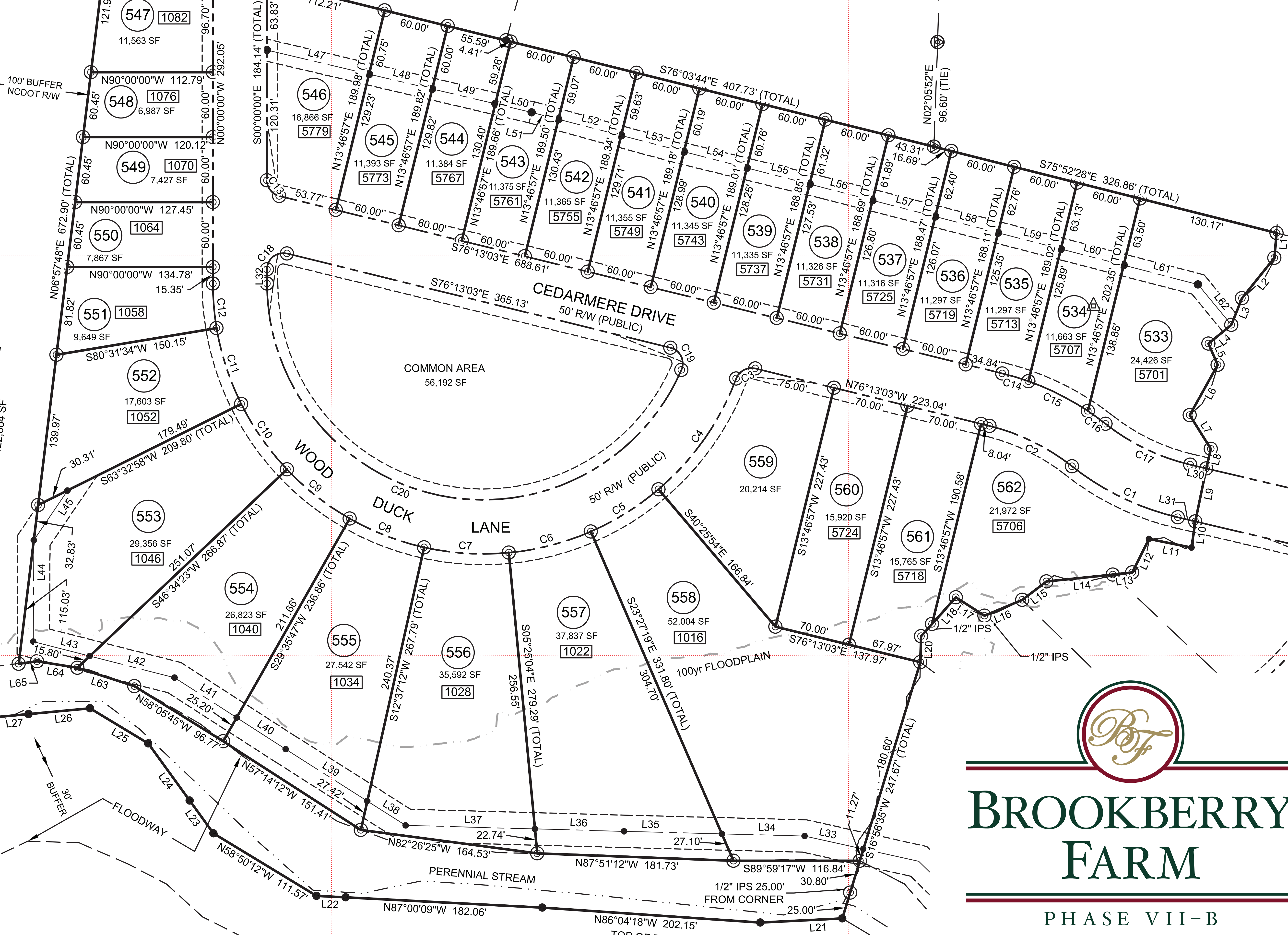
50' R/W (PUBLIC)

100yr FLOODPLAIN

1/2" IPS 25.00'
FROM CORNER

1/2" IPS

TOP OF BANK



**BROOKBERRY
FARM**

PHASE VII-B

BROOKBERRYFARM.COM